



# IT-Automatisierung bei dm

OSAD Munich – October, 16th 2018

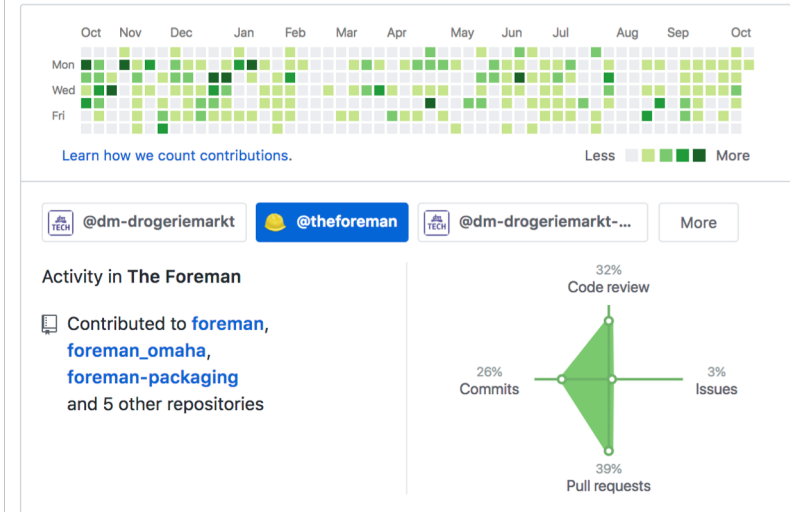


# Who am I?

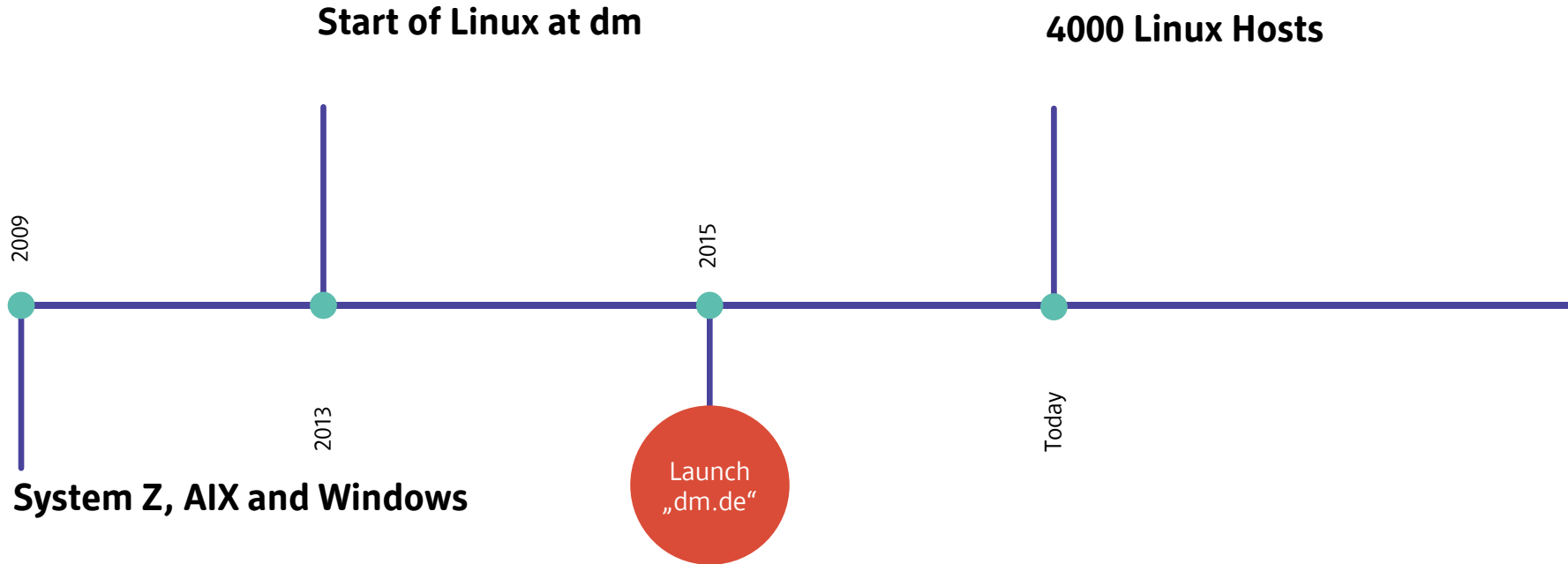


- Timo Goebel
- mail@timogoebel.name
- <https://github.com/timogoebel>
- dmTECH GmbH, Responsible for Linux on Servers
- Foreman & fog-vsphere Committer

554 contributions in the last year in The Foreman



# Linux at dm

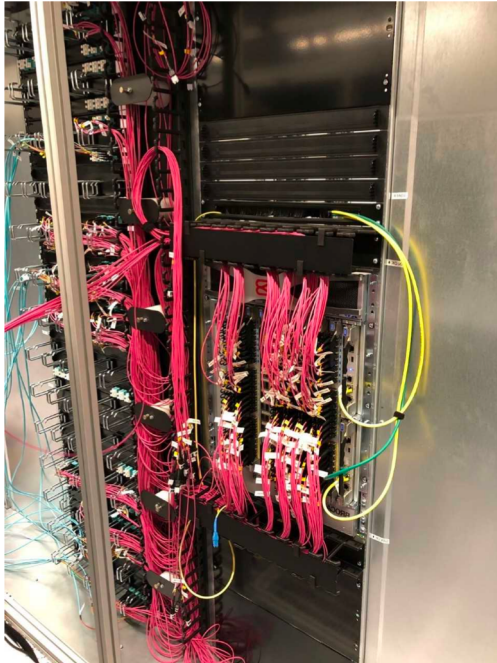




1. Ecosystem
2. Our special Foreman
3. Server Self-Service
4. Outlook



# Ecosystem



- We operate our own datacenters
- VMWare vSphere Hypervisor
- RHEL and SLES
- Provisioning with Foreman
- Config Management with Puppet
- We love to automate

Puppet



managed by other teams

Control  
Repo

Control  
Repo

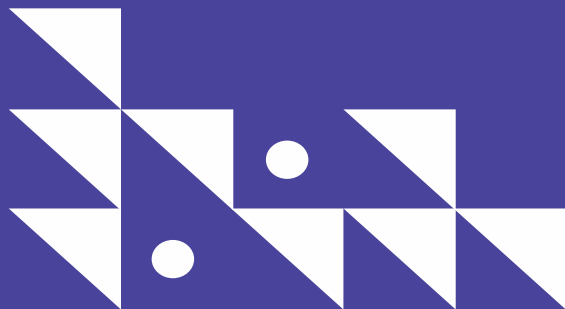
Control  
Repo

Core Modules

managed by us



# Our Special Foreman



# Foreman



- Open Source Project to manage the lifecycle of servers
- Orchestrates other systems
- Can create VMs, DNS-Entries, DHCP-Reservations, ...
- Shows Reports from Puppet (or Ansible, Chef, Salt, ...)



redhat  
Satellite



# Foreman Omaha



- CoreOS does not have any packages, just a single image
- It's super cool!
- Image Mirror for CoreOS in Smart Proxy
- Manages Updates of Servers
- We have crazy CoreOS Snippets, Foreman's templating engine is awesome
- Adds Reporting Dashboards
- Building block for our Kubernetes cluster



# Foreman Rescue



- Boot a host into an Anaconda based rescue system
- Build mode with a different template
- Might be a good candidate for core 😊

# Foreman Wreckingball



FOREMAN

FD-PS-LX ▾ Any Location ▾

Timo Goebel ▾

Hosts > VMware Status Overview

Notice

The status data is not updated automatically and might be out of data. The newest data was recorded on October 15, 2018 08:47.

>

VMware Tools

VMWare Tools should be running and up-to-date.

3785 OK

147 Warning

7 Critical

>

VM Operatingssystem

The VM operatingsystem should match the operatingsystem installed.

3927 OK

12 Warning

0 Critical

>

CPU Hot Plug

Enabling CPU hot-add disables vNUMA, the virtual machine will instead use UMA. This might cause a performance degradation.

3937 OK

0 Warning

2 Critical

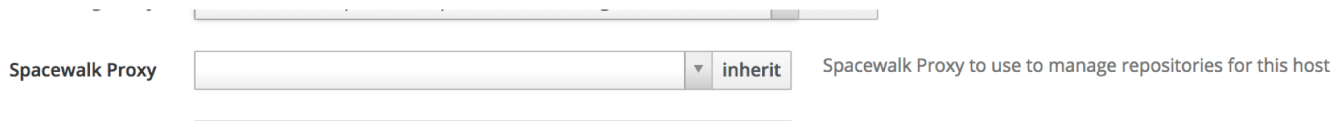
# Foreman DLM

- Lock Management for Hosts
- If you have 10 Webservers, you just want to update a single one at the same time
- Hosts are identified by the PuppetCA certificate
- Workflow:
  - Try to acquire Lock
  - Exit if lock is already taken by another host
  - Do the upgrade process, reboot the host
  - Release lock



# Foreman Spacewalk

- Foreman + Smart Proxy plugins
- Packages for our SUSE-Systems are provided by SUSE Manager (Spacewalk)
- Foreman is used for provisioning
- When a Host is deleted or reprovisioned, it's removed from Spacewalk



The screenshot shows a web interface for configuring a Spacewalk Proxy. At the top, there is a horizontal progress bar. Below it, the label "Spacewalk Proxy" is positioned to the left of a text input field. The input field contains the word "inherit" and has a small downward-pointing arrow on its right side. To the right of the input field, the text "Spacewalk Proxy to use to manage repositories for this host" is displayed. Below the input field, there is a thin horizontal line.

# Foreman Expire Hosts

[foreman] Expiring hosts in foreman



linuxteam@dm.de

Gestern, 07:45

DE-Mailbox, FD-ITS-Linux-TG; Goebel, Timo

Allen antworten

Diese Nachricht wurde mit hoher Priorität gesendet.

The following hosts will be expired on 2018-05-29. Please change expiry date if you want to keep these hosts alive.

Hostname	Host group	Environment	Expiration Date
[REDACTED]	INFRA	stable	2018-05-29 (in 7 days)

# Foreman Monitoring

- Foreman + Smart Proxy plugins
- Links Foreman to a Monitoring system, currently only icinga2 is supported
- Set Downtimes
- Create / Delete host in Monitoring Solution
- Integrated with lock manager
  - When a host acquires a lock, Foreman sets a downtime

[Pull requests](#) [Issues](#) [Marketplace](#) [Explore](#)

## dmTECH Open Source

Open Source projects of dmTECH - subsidiary of dm-drogerie markt, Europe's largest drugstore

📍 Karlsruhe, Germany

🌐 <https://www.dmtech.de>



**Repositories** 15



**People** 37



**Teams** 11



**Projects** 0



**Settings**

### Pinned repositories

≡ [selavi](#)

Service Landscape Visualizer

● JavaScript ★ 18 🍴 5

≡ [micrometer-metrics-wrapper](#)

Micrometer wrapper to allow generic class level metric values

● Java ★ 4 🍴 1



Type: All ▾

Language: All ▾

New

### [foreman\\_dlm](#)

A plugin for Foreman that allows Foreman to act as a distributed lock manager.

[ruby](#)

[foreman](#)

[theforeman](#)

● Ruby ★ 5 🍴 2 📄 GPL-3.0 6 issues need help Updated an hour ago

#### Top languages

● Ruby ● Java ● JavaScript  
● Python ● HTML

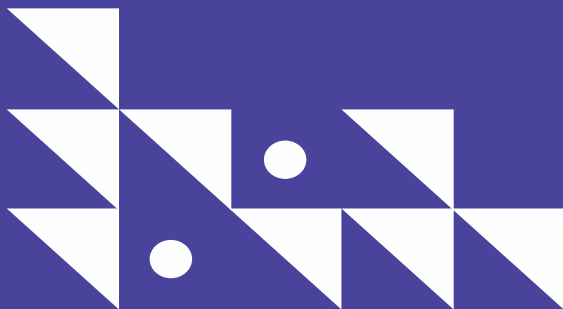
#### Most used topics

[Manage](#)





# Server Self-Service

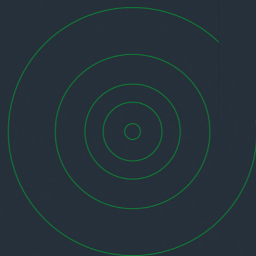
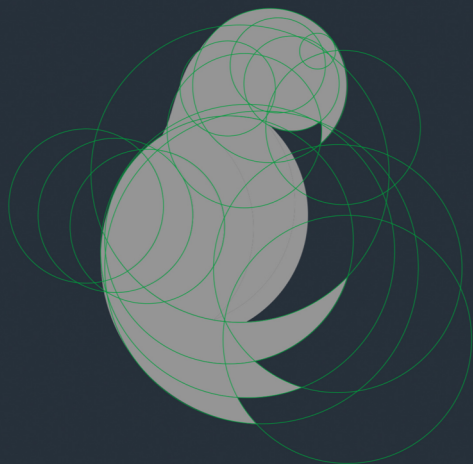




LISA

# LISA

FONT: Montserrat / SemiBold



Pantone 115C



Pantone 165C

Pantone 388C



Pantone 361C

Pantone 337C



Pantone 7455C





## Create Hosts

## Basic Resources Configuration

You can pick from available presets for basic configuration. Switch to the manual tab if you would like a fine tuned setup.

Preset Manual

<div>Red-Hat</div> <div>2 CPUs</div> <div>4 GB RAM</div> <div>75 GB disk</div>	<div>Red-Hat</div> <div>4 CPUs</div> <div>8 GB RAM</div> <div>75 GB disk</div>	<div>Red-Hat</div> <div>8 CPUs</div> <div>16 GB RAM</div> <div>75 GB disk</div>	<div>Red-Hat</div> <div>4 CPUs</div> <div>16 GB RAM</div> <div>75 GB disk</div>
--	--	---	---

## Pick Server Location

<div></div> <div>Karlsruhe</div> <div>Datacenters 1 &amp; 2 (LAN)</div>	<div></div> <div>Karlsruhe</div> <div>Datacenters 1 &amp; 2 (DMZ)</div>	<div></div> <div>Karlsruhe</div> <div>Datacenter 3 (LAN)</div>	<div></div> <div>Karlsruhe</div> <div>Datacenter 3 (DMZ)</div>
---	---	--	--

## Server Configuration

## App Tier

igprod

## Subnet

Loading data from server

## Datastore type

Mirror

**App Tier** - An application tier specifies the application staging environment.

**igprod** - development stage, for sandbox tests

**igdev** - development stage, for development

**igstage** - QA stage, for integration tests

**igrls** - QA stage, for release tests

**igperf** - QA stage, for performance tests

**igprod** - for production hosts that contain live data

## Automated server configuration



The servers will be configured with basic operating system settings. If you want to use custom puppet code to set up your server, use the link below.

[Puppet configuration >](#)

## Hosts Creation

Add project details, tell us how many hosts you want to create, and give your hosts names that will help you to identify them.

## Provide project details

Project and Host Role can include only letters (a-z) and Numbers (0-9). Host Count influences number of input fields for host names.

## Project

one

## Host Role in the Project

server

## Host Count

- 1 +

## Choose host names

The name should match the following pattern **project-role-id** and can include only letters (a-z) and numbers (0-9).

## Host 1 Name

one-server-01

Create Hosts!

Please fill in missing information



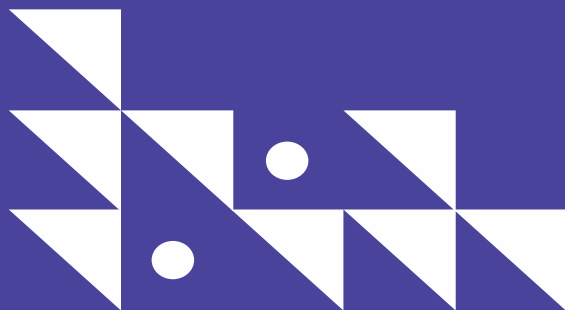


# LISA - Specs

- Written entirely as a SPA in React
- Backend provided by GraphQL implemented as a Foreman plug-in



# Outlook



# Outlook



- This is a good solution. But how does this work together with the Cloud Native approach?



Thank you.